



# Embedded 4G router module

Model: LBT-T300

Version: M400-D-CN-4GA-W4-RS485

## Product Introduction:

The multi-functional 4G industrial router module is a module that supports 2 Ethernet ports (1 LAN, 1 WAN), WIFI local area network (802.11 b/g/n) communication, serial port DTU, and wide area network 4G wireless communication functions. It enables seamless connection between wireless local area networks and wireless wide area networks, providing users with high-speed, secure, and reliable mobile broadband services. This module also supports 4G access from China Mobile, China Unicom, China Telecom, and China Mobile. It can transmit images from fixed cameras via 4G network, providing stable and reliable network channels for various devices that need to be connected to the internet. It offers simple and easy-to-use multiple network access methods through Ethernet ports, RS232 ports, RS485 ports, and WIFI to meet the needs of customers' applications, simplifying network development requirements to the greatest extent.

It supports WEB configuration mode, which is convenient and simple for management and supports remote cloud control.

Countries	4G/5G network solutions	Wireless network	Number of slots	Serial port Protocol	Custom content
CN= China Version EU= European version NA= North American version GL= Global Edition SA= South American version JP= Japanese version AU= Australian version	A= Domestic Q= Qualcomm V=4G private network R=Redcap H= hisilicon	W0= No WiFi W4=WiFi4 W5=WiFi5 W6=WiFi6	S1= Single card S2= Dual cards	RS232 RS485 TTL	DO POE GPS ESIM

Example: M400-D-CN-4GA-W4-S1-RS485; Version M400-D, China 4G domestic solution, single band WiFi4, single card, protocol RS485, no customization

Note: Some versions do not allow customization of the above content.

## ○ Hardware parameters

Product size	74*42*12.5mm(L×W×H)
External interface	RS232/485 interface: 1 unit (customized required) (2.0mm 4PIN connector) LAN port: 2 units (LAN1 is WAN/LAN adaptive) Reset button: 1 unit
Protection grade	Terminal power supply interface: 1 unit Indicator lights: 3 units Antenna interface: 1-3 units (optional) SIM card slot: 1 unit
Power supply	DC power supply: 5-12V/ 1A
Indicator light	LINK 、 SYS 、 WiFi
Antenna	IPEX First Generation Mother Head
Authentication	CE 、 FCC 、 CCC
Storage memory	Storage :16MB, memory: 64MB
Power consumption (current)	less than 400 mA
Operating temperature Humidity	Operating temperature: -20 to +70 ° C Storage temperature: -40 to +80 ° C Humidity: 5 to 95% (non-condensing)

## ○ Optional frequency bands

4G band	CN: FDD-LTE B1/3/5/8 TDD-LTE B38/39/40/41 EU: FDD-LTE B1/3/5/7/8/20 TDD-LTE B38/39/40/41 AU:FDD-LTE B1/3/5/7/8/20/28 TDD-LTE B38/40/41 NA: FDD-LTE B2/3/4/5/7/8/12/13/17/25/26/66 TDD-LTE B41 SA: FDD-LTE B2/4/5/7/8/28 TDD-LTE B40 J: FDD-LTE B1/3/8/18/19/26 TDD-LTE 41 GL: FDD-LTE B1/2/3/4/5/7/8/17/20/28 TDD-LTE B38/39/40/41
---------	---

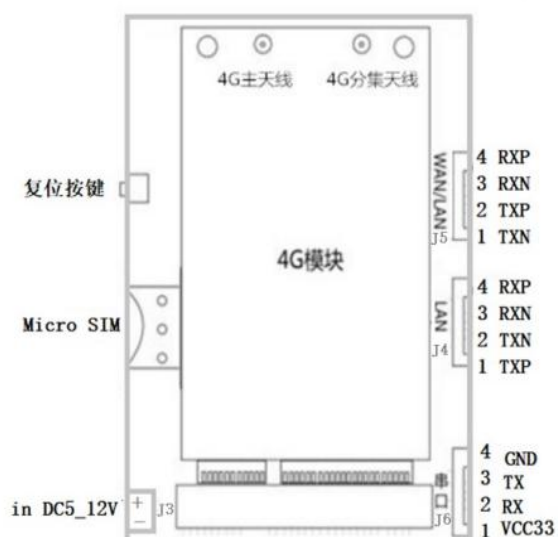
## ○ Feature Data

Basic Features	4G Internet Protocol: 4G Dial-up Internet Access, DHCP/Static, IP/PPPoE Supported number of users: Wired: 253, Wireless: 30 VPN Protocol: PPTP Client, L2TP Client (only supported in dedicated network version) WiFi Protocol: IEEE802.11b/g/n Port Protocol: NAT, DNAT, DMZ, Port Forwarding Dynamic DNS: Supports Huaxia Shell, 88IP and dyndns domain name service providers
Operating frequency band	2400-2483.5MHz
WiFi transmission Rate/Data	Transfer rate: 300Mbps(MAX) (theoretical maximum) WiFi data: 802.11n:-66 dBm at 300 Mbps/HT 40 MCS7:+1 3.5 dBm 802.11b:-86dBm at 11Mbps/CCK :+18 dBm 802.11g:-73dBm at 54Mbps/OFDM: +1 3.5 dBm
WLAN Security Consultative	OpenSystem 、 WPA-PSK 、 WPA2-PSK、 WPAPSKWPA2PSK、 WPA1WPA2
System Services	Virtual servers, port triggers, serial port services, firewalls, MAC filtering, access control, port blocking, regional Settings, factory reset, NTP server Settings, backup system information, software upgrades, remote management
Operating system Browser Requirements	System :Windows XP/VISTA, Linux 2.6, Windows 7 , MAC OS: 1 0.3.7 ; Browser :IE:6.0 Safari:1.2.4 Firefox:2.0.0.8

## ○ Product packaging size/weight

Product weight (g)	24g
Product dimensions (mm)	74*42*12.5mm
Packaging size (cm)	14*16cm(Bubble bag)
Product packaging weight (kg)	0.5kg
Outer box dimensions (cm)	71.3*44.3*26.8cm
Container weight estimate (kg)	17kg

## A



A: Connector J7

Pin number	Signal Name	Signal function
1	GPI00	I/O
2	GPI037	I/O
3	GPI003	I/O
4	GND	Grounding

C: Connector J4 Ethernet connection LAN

Pin number	Signal Name	Signal function
1	TXP	Ethernet differential transmit negative terminal
2	TXN	Ethernet differential transmission positive pole
3	RXN	Ethernet differential transmit negative terminal
4	RXP	Ethernet differential transmission positive pole

E: Connector J3 Power input

Pin number	Signal Name	Signal function
1	VCC	DC12V +
2	GND	DC12V -

## B



B: Connector J6 Data serial port (232, 485)

Pin number	Signal Name	Signal function
1	VCC	3.3V
2	RXD/B	Serial port input
3	TXD/A	Serial port output
4	GND	Grounding

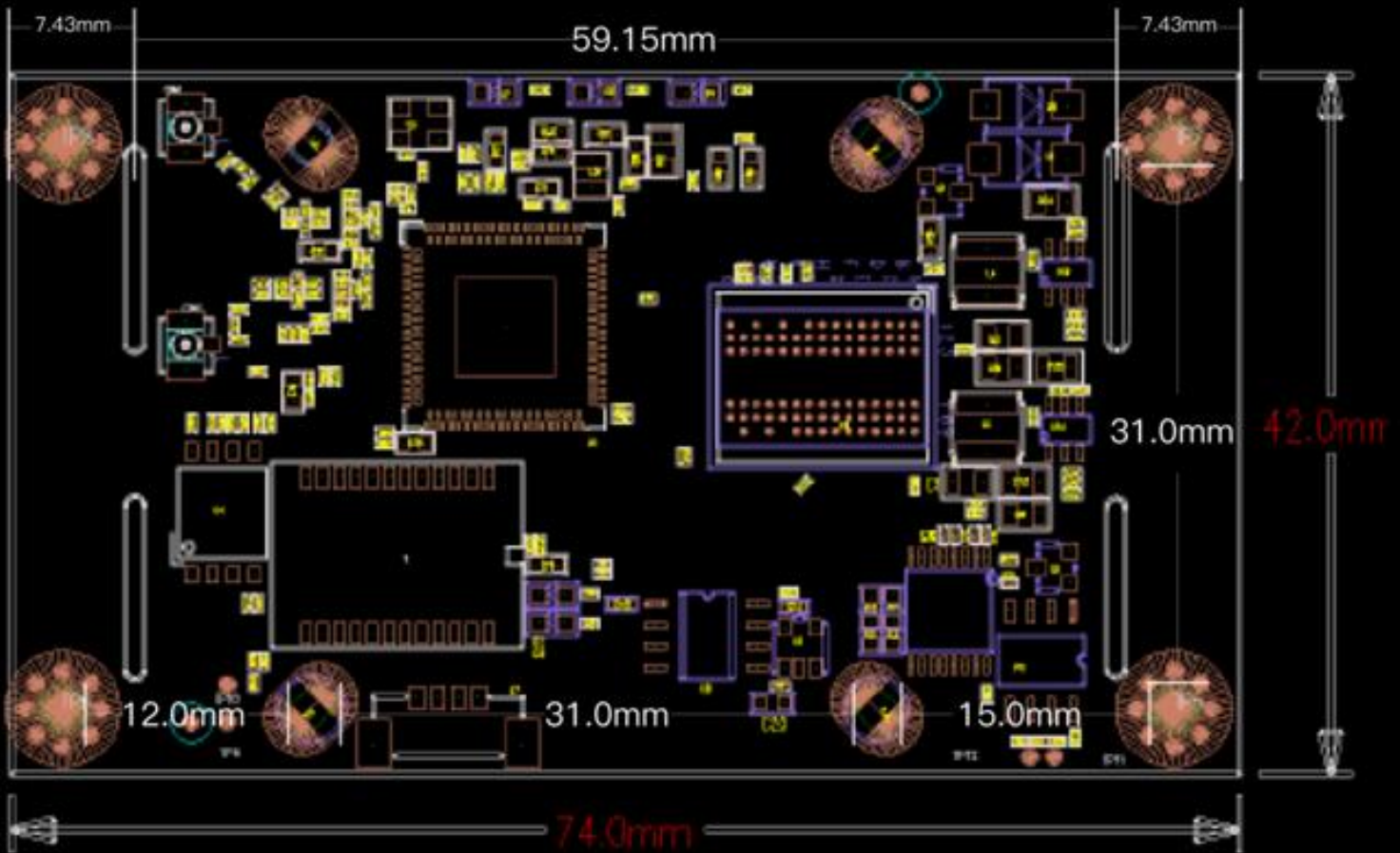
D: Connector J5 Ethernet connection WAN/LAN

Pin number	Signal Name	Signal function
1	TXN	Ethernet differential transmission positive pole
2	TXP	Ethernet differential transmit negative terminal
3	RXN	Ethernet differential transmit negative terminal
4	RXP	Ethernet differential transmission positive pole

F: Connector J1 Debug Serial port

Pin number	Signal Name	Signal function
1	VCC	Power
2	RXD0	Receive TTL
3	TXD0	Send TTL
4	GND	Grounding

## ○ Exterior positioning hole illustration



## ○ Standard accessories



Power adapter \*1



2 m suction cup antenna -  
WiFi



2 m suction cup antenna -4G  
(Optional cabinet antenna, rubber stick  
antenna, etc.)



SIM card \*1



Certificate of conformity \*1