

# Embedded 4G router module

Model: LBT-T300

Version: M400-C1-CN-4GA-W4-TTL

**Product Introduction:**

The multi-functional 4G industrial router M400-C1 module is a module that supports 3 Ethernet ports, WIFI local area network (802.11 b/g/n) communication, serial port DTU, and wide area network 4G wireless communication functions. It enables seamless connection between wireless local area network and wireless wide area network, providing users with high-speed, secure, and reliable mobile broadband services. It can transmit images from fixed cameras via 4G network, providing stable and reliable network channels for various devices that need to be connected to the internet. It offers simple and easy-to-use multiple network access methods through Ethernet ports, TTL serial ports, and WIFI to meet the needs of customers' applications, simplifying network development requirements to the greatest extent.

It supports WEB configuration method, making management convenient and simple.

Countries	4G/5G network solutions	Wireless network	Number of slots	Serial port Protocol	Custom content
CN= China Version EU= European version NA= North American version GL= Global Edition SA= South American version JP= Japanese version AU= Australian version	A= Domestic Q= Qualcomm V=4G private network R=Redcap H= hisilicon	W0= No WiFi W4=WiFi4 W5=WiFi5 W6=WiFi6	S1= Single card S2= Dual cards	RS232 RS485 TTL	DO POE GPS ESIM

Example: M400-C1-CN-4GA-W4-S1-RS485; Version M400-C1, China 4G domestic solution, single band WiFi4, single card, protocol RS485, no customization

Note: Some versions do not allow customization of the above content.

## ○ Hardware parameters

Product size	38.0*43.5*7.5mm(L×W×H)
Power supply	Dc power supply: 6-25V/3A
GPS	Customizable GNSS positioning module, supporting RTK technology, and capable of using a variety of satellite systems (GPS, GLONASS, Beidou, WAAS, EGNOS, MSAS, GAGAN) as a mixed engine.
External interface	Reset button: 1 Indicator lights: 5 Antenna interfaces: 1-5 (optional) SIM card slots: 1
Protection grade	Terminal power supply interface: 1 TTL interface: 1 LAN ports: 3 (LAN1 is WAN/LAN adaptive)
Indicator light	LINK, SYS, WAN/LAN1 to LAN2
Antenna	IPEX1 Mother Board
Storage memory	Storage :16MB, memory: 64MB
Authentication	CE, FCC, CCC
Power consumption (current)	less than 400 mA
Operating temperature Humidity	Operating temperature: -20 to +70 ° C Storage temperature: -40 to +80 ° C Humidity: 5 to 95% (non-condensing)

## ○ Optional frequency bands

4G band	CN: FDD-LTE B1/3/5/8 TDD-LTE B38/39/40/41 EU: FDD-LTE B1/3/5/7/8/20 TDD-LTE B38/39/40/41 AU:FDD-LTE B1/3/5/7/8/20/28 TDD-LTE B38/40/41 NA: FDD-LTE B2/3/4/5/7/8/12/13/17/25/26/66 TDD-LTE B41 SA: FDD-LTE B2/4/5/7/8/28 TDD-LTE B40 J: FDD-LTE B1/3/8/18/19/26 TDD-LTE 41 GL: FDD-LTE B1/2/3/4/5/7/8/17/20/28 TDD-LTE B38/39/40/41
---------	---

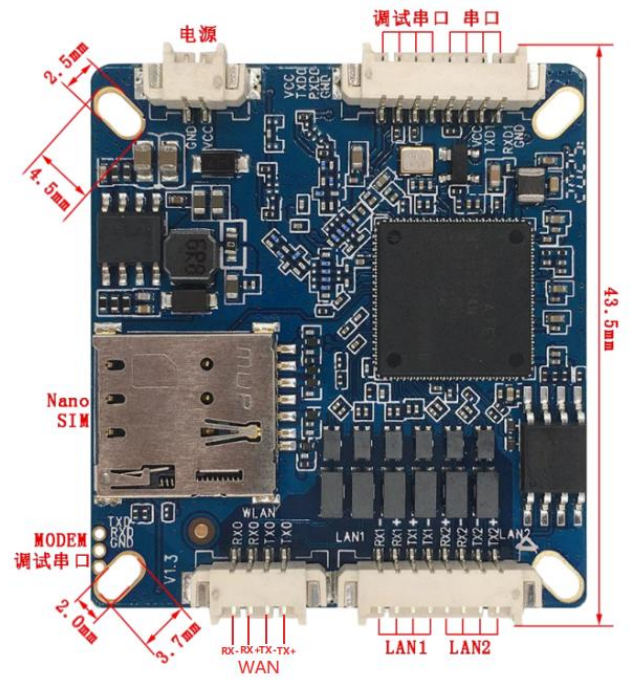
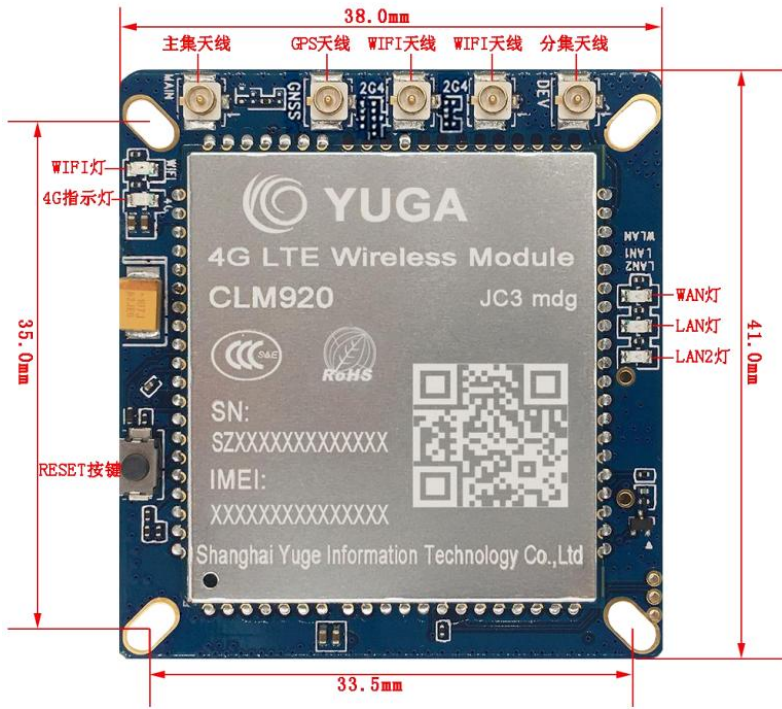
## ○ Feature Data

Basic functions	4G Internet Protocol: 4G Dial-up Internet Access, DHCP/Static IP Supported number of users: Wired: 30, Wireless: 20 Network functions: NAT, DNAT, DMZ, Port Forwarding Soft and hardware watchdog design to prevent system freeze. When the router loses connection, it will automatically power off and restart to ensure stable and reliable operation of the equipment.
LTE speed	FDD-LTE: 150M DL / 50M UL Cat4 TDD-LTE: 130M DL / 35M UL Cat4
Working frequency band	2412-2484MHz
WLAN Security Consultative	OpenSystem, WPA-PSK, WPA2-PSK, WPAPSK/WPA2 PSK, WPA1 / WPA2
WiFi transmission Rate/Data	Transfer rate: 300Mbps(MAX) (theoretical maximum) WiFi data: 802.11n:-66 dBm at 300 Mbps/HT 40 MCS7:+1 3.5 dBm 802.11b:-86dBm at 11Mbps/CCK :+18 dBm 802.11g:-73dBm at 54Mbps/OFDM: +1 3 .5 dBm
System Services	Port triggering, serial port service, firewall, MAC filtering, access control, port blocking, zone settings, factory reset recovery, NTP server settings, system information backup, software upgrade/remote management
Operating system Browser Requirements	System :Windows XP/VISTA, Linux 2.6, Windows 7 , MAC OS: 1.0.3.7 ; Browser :IE:6.0 Safari:1.2.4 Firefox:2.0.0.8

## ○ Product packaging size/weight

Product weight (g)	24g
Product dimensions (mm)	38.0*43.5*7.5mm
Packaging size (cm)	14*16cm(Bubble bag)
Product packaging weight (kg)	0.5kg
Outer box dimensions (cm)	71.3*44.3*26.8cm
Container weight estimate (kg)	17kg

## ○ Interface and Positioning Hole Specification



## ○ Standard accessories



Power adapter \*1



2 m suction cup antenna - WiFi



2 m suction cup antenna -4G  
(Optional cabinet antenna, rubber stick antenna, etc.)



SIM card \*1



Certificate of conformity \*1