



# Embedded 4G router module

Model: LBT-T300

Version: M500-CN-4GA-W4

## Product Introduction :

This module is a 5G private network wireless communication module developed based on EUHT-5G technology and the NL6683 platform. Its size is 51x38x8.5mm and its weight is approximately 15 grams. The module is equipped with a variety of peripheral interfaces and a powerful software support platform. It has a friendly secondary development software and hardware platform, which can support multiple peripheral devices, support the standard AT instruction set, and meet the rich business function requirements of users.

Countries	4G/5G network solutions	Wireless network	Number of slots	Serial port Protocol	Custom content
CN= China Version EU= European version NA= North American version GL= Global Edition SA= South American version JP= Japanese version AU= Australian version	A= Domestic Q= Qualcomm V=4G private network R=Redcap H= hisilicon	W0= No WiFi W4=WiFi4 W5=WiFi5 W6=WiFi6	S1= Single card S2= Dual cards	RS232 RS485 TTL	DO POE GPS ESIM

Example: M500-CN-4GA-W4-S1; Version M500, China 4G domestic solution, single band WiFi4, single card,, no customization

Note: Some versions do not allow customization of the above content.

## ○ Hardware parameters

Product size	51*38*10.5mm(L×W×H)
External interface / Protection level	RS232/485 interface: 1 unit (customized required) (2.0mm 4PIN connector) LAN port: 2 units (LAN1 is WAN/LAN adaptive) Reset button: 1 unit Terminal power supply interface: 1 unit Indicator lights: 3 units Antenna interface: 1-3 units (optional)
Power supply	DC: 9-24V/0.5A
Indicator light	pwr、sys
Antenna	IPEX First Generation Mother Head
Certification	CE、FCC、CCC
Storage memory	Storage: 8MB, Memory: 64MB
Power consumption (current)	Less than 3W
Work environment	Operating temperature: -30 to +70°C Storage temperature: -40 to +85°C Humidity: 5 to 95% (no condensation)

## ○ Feature Data

Basic functions	4G Internet Protocol: 4G Dial-up Internet Access, DHCP/Static, IP/PPPoE Supported number of users: Wired: 253, Wireless: 30 VPN Protocol: PPTP Client, L2TP Client (only supported in dedicated network version) WiFi Protocol: IEEE802.11b/g/n Port Protocol: NAT, DNAT, DMZ, Port Forwarding Dynamic DNS: Supports Huaxia Shell, 88IP and dyndns domain name service providers
Working frequency band	2400-2483.5MHz
WiFi Transmission rate / Data	Transmission rate: 300Mbps (MAX) (Theoretical maximum value) WiFi data: 802.11n: -66dBm at 300Mbps HT40MCS7: +15.5 dBm 802.11b: -86dBm at 11Mbps CCK: +18 dBm 802.11g: -73dBm at 54Mbps OFDM: +15.5 dBm
WLAN Security Consultative	WPA-PSK、WPA2-PSK、WPAPSK/WPA2PSK、WPA1/WPA2
System service	Virtual server, port triggering, serial port service, firewall, MAC filtering, access control, port blocking, area settings, restore factory settings, NTP server settings, backup system information, software upgrade/remote management
Operating system Browser Requirements	System :Windows XP/VISTA, Linux 2.6, Windows 7, MAC OS: 10.3.7 ; Browser :IE:6.0 Safari:1.2.4 Firefox:2.0.0.8

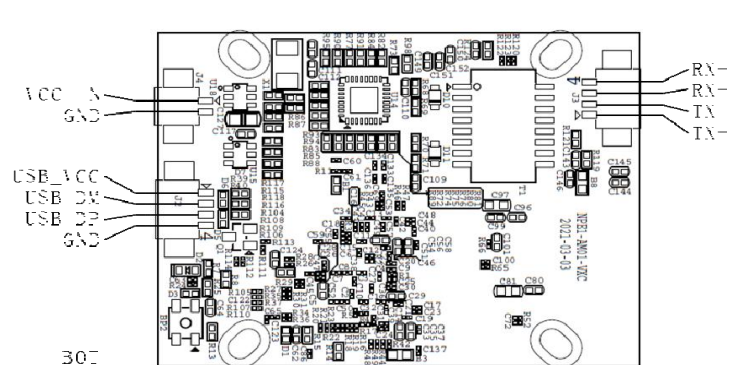
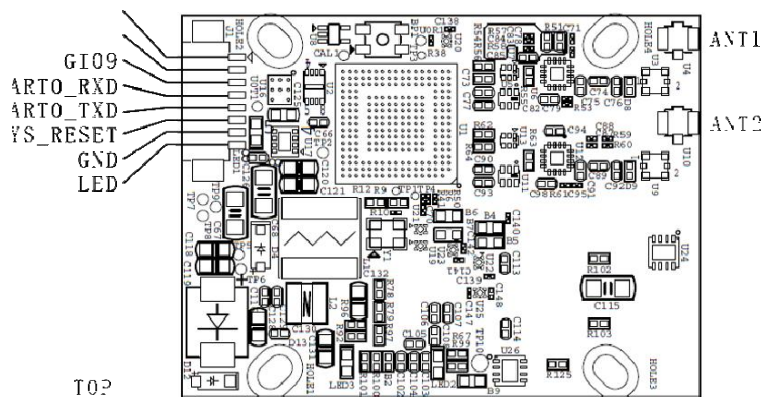
## ○ Product packaging size/weight

Product weight (g)	5.2g
Product dimensions (mm)	51*38*10.5mm
Packaging size (cm)	14*16cm(Bubble bag)
Product packaging weight (kg)	0.5kg
Outer box dimensions (cm)	71.3*44.3*26.8cm
Container weight estimate (kg)	17kg

# ○ Interface Description

A面

B面



# ○ Housing positioning holes

